

IMPLANT FUNCTION THROUGH STRUCTURAL DESIGN

OSTEOTOMY TRUSS SYSTEM™

OSTEOTOMY WEDGE DEVICE

4WEB Medical's 3D printed truss implant technology utilizes engineering principles such as structural mechanics and adjacent material reaction to produce innovative foot and ankle implants.



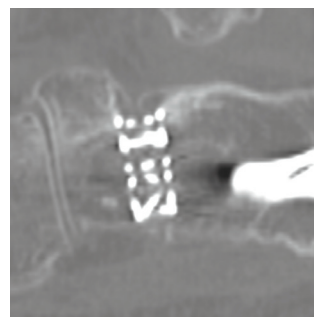
HIGH-STRENGTH STRUCTURES IN ACTION¹

- + 4WEB Cotton, Evans and Utility F&A cages may replace the need for allograft wedges.
- + 74 size options are included in one versatile set, making the Osteotomy Truss System a comprehensive solution for all of the surgeon's osteotomy needs.
- + Unique implant surface texture reduces the chance of migration.
- + Open architecture of the 4WEB implants allows for up to 75% natural graft material.

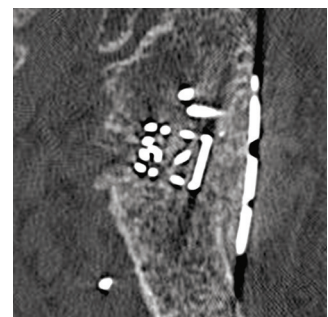
EVANS OSTEOTOMY 3-MONTH CT SCAN POST-OP RESULTS



PATIENT 1



PATIENT 2



PATIENT 3



PRODUCT SPECIFICATIONS

ITEM	CATALOG NUMBER	FOOTPRINT	ANGLE
COTTON			
1	COTS-XS1304	13W X 11D X 4.5H	9°
2	COTS-XS1305	13W X 11D X 5.5H	13°
3	COTS-XS1306	13W X 11D X 6.5H	17°
4	COTS-XS1308	13W X 11D X 8H	13°
5	COTS-XS1310	13W X 11D X 10H	21°
6	COTS-XS1312	13W X 11D X 12H	28°
7	COTS-SM1604	16W X 14D X 4.5H	7°
8	COTS-SM1605	16W X 14D X 5.5H	11°
9	COTS-SM1606	16W X 14D X 6.5H	14°
10	COTS-SM1608	16W X 14D X 8H	11°
11	COTS-SM1610	16W X 14D X 10H	18°
12	COTS-SM1612	16W X 14D X 12H	24°
13	COTS-MD2004	20W X 14D X 4.5H	6°
14	COTS-MD2005	20W X 14D X 5.5H	9°
15	COTS-MD2006	20W X 14D X 6.5H	11°
16	COTS-MD2008	20W X 14D X 8H	9°
17	COTS-MD2010	20W X 14D X 10H	14°
18	COTS-MD2012	20W X 14D X 12H	19°
19	COTS-MD2014	20W X 14D X 14H	17°
20	COTS-MD2016	20W X 14D X 16H	22°
21	COTS-LG2304	23W X 17D X 4.5H	5°
22	COTS-LG2305	23W X 17D X 5.5H	7°
23	COTS-LG2306	23W X 17D X 6.5H	10°
24	COTS-LG2308	23W X 17D X 8H	7°
25	COTS-LG2310	23W X 17D X 10H	12°
26	COTS-LG2312	23W X 17D X 12H	17°
27	COTS-LG2314	23W X 17D X 14H	15°
28	COTS-LG2316	23W X 17D X 16H	19°

EVANS			
57	EOTS-SM1804	18W X 18D X 4.5H	7°
58	EOTS-SM1805	18W X 18D X 5.5H	10°
59	EOTS-SM1806	18W X 18D X 6.5H	14°
60	EOTS-SM1808	18W X 18D X 8H	10°
61	EOTS-SM1810	18W X 18D X 10H	17°
62	EOTS-SM1812	18W X 18D X 12H	24°
63	EOTS-MD2004	20W X 20D X 4.5H	6°
64	EOTS-MD2005	20W X 20D X 5.5H	9°
65	EOTS-MD2006	20W X 20D X 6.5H	12°
66	EOTS-MD2008	20W X 20D X 8H	9°
67	EOTS-MD2010	20W X 20D X 10H	15°
68	EOTS-MD2012	20W X 20D X 12H	21°

ITEM	CATALOG NUMBER	FOOTPRINT	ANGLE
UTILITY			
29	UOTS-XS1604	20W X 16D X 4.5H	8°
30	UOTS-XS1605	20W X 16D X 5.5H	12°
31	UOTS-XS1606	20W X 16D X 6.5H	15°
32	UOTS-XS1608	20W X 16D X 8H	12°
33	UOTS-XS1610	20W X 16D X 10H	19°
34	UOTS-XS1612	20W X 16D X 12H	27°
35	UOTS-SM1804	22W X 18D X 4.5H	7°
36	UOTS-SM1805	22W X 18D X 5.5H	10°
37	UOTS-SM1806	22W X 18D X 6.5H	14°
38	UOTS-SM1808	22W X 18D X 8H	10°
39	UOTS-SM1810	22W X 18D X 10H	17°
40	UOTS-SM1812	22W X 18D X 12H	24°
41	UOTS-MD3006	20W X 30D X 6H	8°
42	UOTS-MD3008	20W X 30D X 8H	11°
43	UOTS-MD3010	20W X 30D X 10H	15°
44	UOTS-MD3012	20W X 30D X 12H	19°
45	UOTS-MD3506	20W X 35D X 6H	7°
46	UOTS-MD3508	20W X 35D X 8H	9°
47	UOTS-MD3510	20W X 35D X 10H	13°
48	UOTS-MD3512	20W X 35D X 12H	16°
49	UOTS-LG3006	25W X 30D X 6H	8°
50	UOTS-LG3008	25W X 30D X 8H	11°
51	UOTS-LG3010	25W X 30D X 10H	15°
52	UOTS-LG3012	25W X 30D X 12H	19°
53	UOTS-LG3506	25W X 35D X 6H	7°
54	UOTS-LG3508	25W X 35D X 8H	9°
55	UOTS-LG3510	25W X 35D X 10H	13°
56	UOTS-LG3512	25W X 35D X 12H	16°

69	EOTS-LG2204	22W X 22D X 4.5H	6°
70	EOTS-LG2205	22W X 22D X 5.5H	8°
71	EOTS-LG2206	22W X 22D X 6.5H	11°
72	EOTS-LG2208	22W X 22D X 8H	8°
73	EOTS-LG2210	22W X 22D X 10H	14°
74	EOTS-LG2212	22W X 22D X 12H	19°