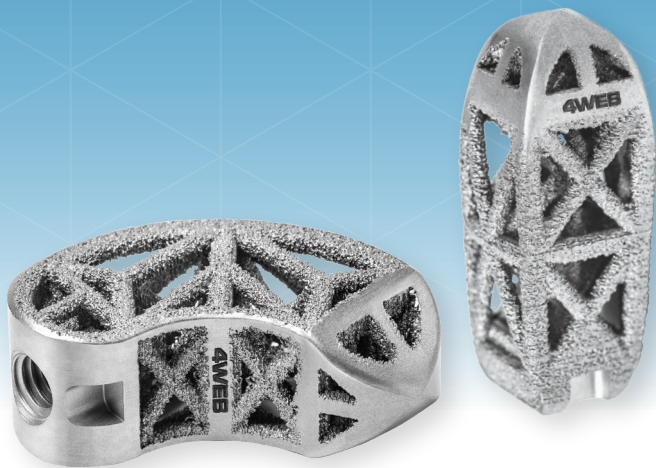




POSTERIOR SPINE TRUSS SYSTEM™ INTERBODY FUSION DEVICE

PSTS has an Advanced Structural Design that incorporates 4WEB Medical's proprietary Truss Implant Technology™. Under normal loading conditions the struts in the truss implant transfer strain to adjacent cellular material which stimulates a mechanobiologic response.



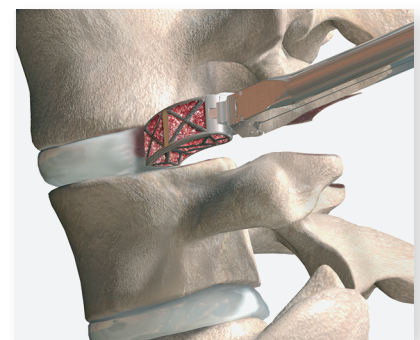
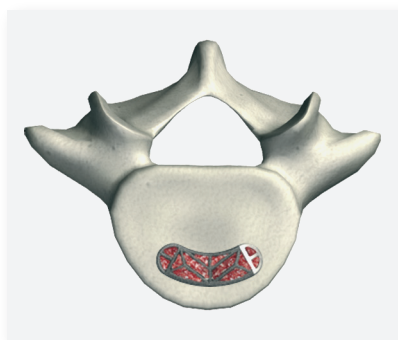
- ▲ Novel Truss Implant Technology™ provides a Snow Shoe Interface that distributes load across the endplate minimizing point loading and reducing the risk of subsidence.*
- ▲ Hierarchical surface roughness spans from the macro to nano scale. These surface features have been shown to stimulate increased gene expression of certain osteogenic markers when compared to other interbody surfaces and materials.¹
- ▲ Open architecture design allows for greater graft volume and bone growth throughout the entire construct.*

Static and articulating inserter options to aid proper implant placement

Hierarchical surface roughness reduces the risk of migration

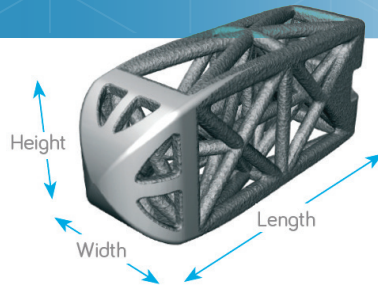
Bi-convex anatomical design to increase endplate contact

Truss design limits imaging artifact

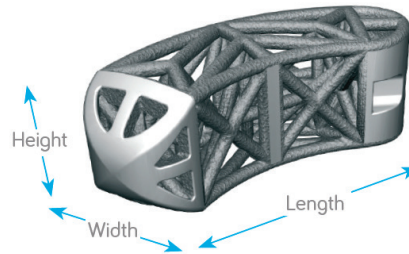


¹ Rowe et al, SMISS, AnnualForum'19, p.52

*Data on File



STRAIGHT



CURVED

PSTS IMPLANT SPECIFICATIONS

PRODUCT CATALOG

CATALOG #	FOOTPRINT (W,L,H)	LORDOSIS
STRAIGHT		
PSTS-SM0006-22-SP	9 x 22 x 6mm	0°
PSTS-SM0008-22-SP	9 x 22 x 8mm	0°
PSTS-SM0010-22-SP	9 x 22 x 10mm	0°
PSTS-SM0012-22-SP	9 x 22 x 12mm	0°
PSTS-SM0014-22-SP	9 x 22 x 14mm	0°
PSTS-SM0608-22-SP	9 x 22 x 8mm	6°
PSTS-SM0609-22-SP	9 x 22 x 9mm	6°
PSTS-SM0610-22-SP	9 x 22 x 10mm	6°
PSTS-SM0611-22-SP	9 x 22 x 11mm	6°
PSTS-SM0612-22-SP	9 x 22 x 12mm	6°
PSTS-SM0613-22-SP	9 x 22 x 13mm	6°
PSTS-SM0614-22-SP	9 x 22 x 14mm	6°
PSTS-SM1210-22-SP	9 x 22 x 10mm	12°
PSTS-SM1211-22-SP	9 x 22 x 11mm	12°
PSTS-SM1212-22-SP	9 x 22 x 12mm	12°
PSTS-SM1213-22-SP	9 x 22 x 13mm	12°
PSTS-SM1214-22-SP	9 x 22 x 14mm	12°
PSTS-SM0006-26-SP	9 x 26 x 6mm	0°
PSTS-SM0008-26-SP	9 x 26 x 8mm	0°
PSTS-SM0010-26-SP	9 x 26 x 10mm	0°
PSTS-SM0012-26-SP	9 x 26 x 12mm	0°
PSTS-SM0014-26-SP	9 x 26 x 14mm	0°
PSTS-SM0608-26-SP	9 x 26 x 8mm	6°
PSTS-SM0609-26-SP	9 x 26 x 9mm	6°
PSTS-SM0610-26-SP	9 x 26 x 10mm	6°
PSTS-SM0611-26-SP	9 x 26 x 11mm	6°
PSTS-SM0612-26-SP	9 x 26 x 12mm	6°
PSTS-SM0613-26-SP	9 x 26 x 13mm	6°
PSTS-SM0614-26-SP	9 x 26 x 14mm	6°
PSTS-SM1210-26-SP	9 x 26 x 10mm	12°
PSTS-SM1211-26-SP	9 x 26 x 11mm	12°
PSTS-SM1212-26-SP	9 x 26 x 12mm	12°
PSTS-SM1213-26-SP	9 x 26 x 13mm	12°
PSTS-SM1214-26-SP	9 x 26 x 14mm	12°
PSTS-MD0608-26-SP	11 x 26 x 8mm	6°
PSTS-MD0609-26-SP	11 x 26 x 9mm	6°
PSTS-MD0610-26-SP	11 x 26 x 10mm	6°

CATALOG #	FOOTPRINT (W,L,H)	LORDOSIS
PSTS-MD0611-26-SP	11 x 26 x 11mm	6°
PSTS-MD0612-26-SP	11 x 26 x 12mm	6°
PSTS-MD0613-26-SP	11 x 26 x 13mm	6°
PSTS-MD0614-26-SP	11 x 26 x 14mm	6°
PSTS-MD1210-26-SP	11 x 26 x 10mm	12°
PSTS-MD1211-26-SP	11 x 26 x 11mm	12°
PSTS-MD1212-26-SP	11 x 26 x 12mm	12°
PSTS-MD1213-26-SP	11 x 26 x 13mm	12°
PSTS-MD1214-26-SP	11 x 26 x 14mm	12°
CURVED		
TSTS-MD0007-27-SP	10 x 27 x 7mm	0°
TSTS-MD0009-27-SP	10 x 27 x 9mm	0°
TSTS-MD0011-27-SP	10 x 27 x 11mm	0°
TSTS-MD0013-27-SP	10 x 27 x 13mm	0°
TSTS-MD0015-27-SP	10 x 27 x 15mm	0°
TSTS-MD0607-27-SP	10 x 27 x 7mm	6°
TSTS-MD0608-27-SP	10 x 27 x 8mm	6°
TSTS-MD0609-27-SP	10 x 27 x 9mm	6°
TSTS-MD0610-27-SP	10 x 27 x 10mm	6°
TSTS-MD0611-27-SP	10 x 27 x 11mm	6°
TSTS-MD0612-27-SP	10 x 27 x 12mm	6°
TSTS-MD0613-27-SP	10 x 27 x 13mm	6°
TSTS-MD0614-27-SP	10 x 27 x 14mm	6°
TSTS-MD0615-27-SP	10 x 27 x 15mm	6°
TSTS-MD0007-32-SP	10 x 32 x 7mm	0°
TSTS-MD0009-32-SP	10 x 32 x 9mm	0°
TSTS-MD0011-32-SP	10 x 32 x 11mm	0°
TSTS-MD0013-32-SP	10 x 32 x 13mm	0°
TSTS-MD0015-32-SP	10 x 32 x 15mm	0°
TSTS-MD0607-32-SP	10 x 32 x 7mm	6°
TSTS-MD0608-32-SP	10 x 32 x 8mm	6°
TSTS-MD0609-32-SP	10 x 32 x 9mm	6°
TSTS-MD0610-32-SP	10 x 32 x 10mm	6°
TSTS-MD0611-32-SP	10 x 32 x 11mm	6°
TSTS-MD0612-32-SP	10 x 32 x 12mm	6°
TSTS-MD0613-32-SP	10 x 32 x 13mm	6°
TSTS-MD0614-32-SP	10 x 32 x 14mm	6°
TSTS-MD0615-32-SP	10 x 32 x 15mm	6°