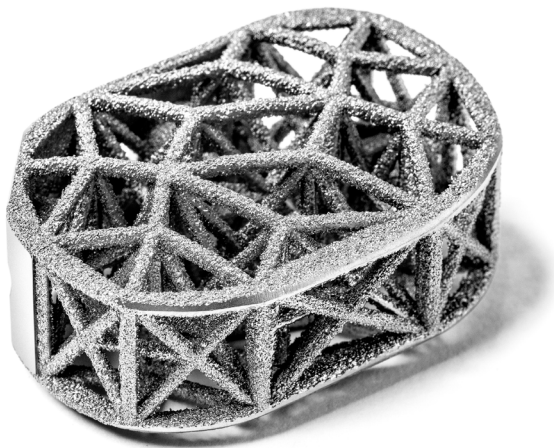


IMPLANT FUNCTION THROUGH STRUCTURAL DESIGN

ANTERIOR SPINE TRUSS SYSTEM™

INTERBODY FUSION DEVICE

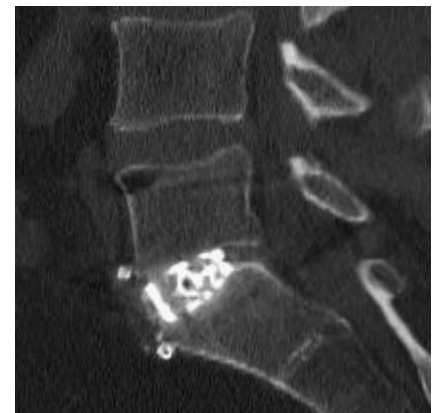
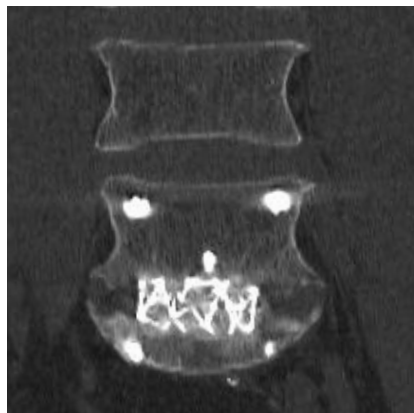
4WEB Medical's 3D printed truss implant technology utilizes engineering principles such as structural mechanics and adjacent material reaction to produce innovative spine implants.



HIGH-STRENGTH STRUCTURES IN ACTION¹

- + Unique implant surface texture reduces the chance of migration.
- + Load distribution reduces stress risers and subsidence related complications.
- + Open architecture allows for up to 75% of the implant to be filled with graft material to maximize bone incorporation.
- + Truss design limits imaging artifact.
- + Bi-convex surface brings implant closer to adjacent bone.

3-MONTH CT SCAN POST-OP RESULTS



PRODUCT SPECIFICATIONS

ITEM	CATALOG NUMBER	FOOTPRINT	LORDOSIS
6 DEGREE LORDOTIC			
1	ASTS-SM0608-SP	32W X 21D X 8H	6°
2	ASTS-SM0610-SP	32W X 21D X 10H	6°
3	ASTS-SM0612-SP	32W X 21D X 12H	6°
4	ASTS-SM0614-SP	32W X 21D X 14H	6°
5	ASTS-SM0616-SP	32W X 21D X 16H	6°
6	ASTS-MD0608-SP	36W X 24D X 8H	6°
7	ASTS-MD0610-SP	36W X 24D X 10H	6°
8	ASTS-MD0612-SP	36W X 24D X 12H	6°
9	ASTS-MD0614-SP	36W X 24D X 14H	6°
10	ASTS-MD0616-SP	36W X 24D X 16H	6°
11	ASTS-LG0608-SP	40W X 27D X 8H	6°
12	ASTS-LG0610-SP	40W X 27D X 10H	6°
13	ASTS-LG0612-SP	40W X 27D X 12H	6°
14	ASTS-LG0614-SP	40W X 27D X 14H	6°
15	ASTS-LG0616-SP	40W X 27D X 16H	6°
12 DEGREE LORDOTIC			
16	ASTS-SM1208-SP	32W X 21D X 8H	12°
17	ASTS-SM1210-SP	32W X 21D X 10H	12°
18	ASTS-SM1212-SP	32W X 21D X 12H	12°
19	ASTS-SM1214-SP	32W X 21D X 14H	12°
20	ASTS-SM1216-SP	32W X 21D X 16H	12°
21	ASTS-MD1208-SP	36W X 24D X 8H	12°
22	ASTS-MD1210-SP	36W X 24D X 10H	12°
23	ASTS-MD1212-SP	36W X 24D X 12H	12°
24	ASTS-MD1214-SP	36W X 24D X 14H	12°
25	ASTS-MD1216-SP	36W X 24D X 16H	12°
26	ASTS-LG1208-SP	40W X 27D X 8H	12°
27	ASTS-LG1210-SP	40W X 27D X 10H	12°
28	ASTS-LG1212-SP	40W X 27D X 12H	12°
29	ASTS-LG1214-SP	40W X 27D X 14H	12°
30	ASTS-LG1216-SP	40W X 27D X 16H	12°

ITEM	CATALOG NUMBER	FOOTPRINT	LORDOSIS
16 DEGREE LORDOTIC			
31	ASTS-MD1610-SP	36W X 24D X 10H	16°
32	ASTS-MD1612-SP	36W X 24D X 12H	16°
33	ASTS-MD1614-SP	36W X 24D X 14H	16°
34	ASTS-MD1616-SP	36W X 24D X 16H	16°
35	ASTS-LG1610-SP	40W X 27D X 10H	16°
36	ASTS-LG1612-SP	40W X 27D X 12H	16°
37	ASTS-LG1614-SP	40W X 27D X 14H	16°
38	ASTS-LG1616-SP	40W X 27D X 16H	16°
20 DEGREE LORDOTIC			
39	ASTS-MD2012-SP	36W X 24D X 12H	20°
40	ASTS-MD2014-SP	36W X 24D X 14H	20°
41	ASTS-MD2016-SP	36W X 24D X 16H	20°
42	ASTS-MD2018-SP	36W X 24D X 18H	20°
43	ASTS-LG2012-SP	40W X 27D X 12H	20°
44	ASTS-LG2014-SP	40W X 27D X 14H	20°
45	ASTS-LG2016-SP	40W X 27D X 16H	20°
46	ASTS-LG2018-SP	40W X 27D X 18H	20°
25 DEGREE LORDOTIC			
47	ASTS-MD2514-SP	36W X 24D X 14H	25°
48	ASTS-MD2516-SP	36W X 24D X 16H	25°
49	ASTS-MD2518-SP	36W X 24D X 18H	25°
50	ASTS-LG2514-SP	40W X 27D X 14H	25°
51	ASTS-LG2516-SP	40W X 27D X 16H	25°
52	ASTS-LG2518-SP	40W X 27D X 18H	25°

*Hyperlordotic (16°, 20°, and 25°) implants by request only in limited quantities.